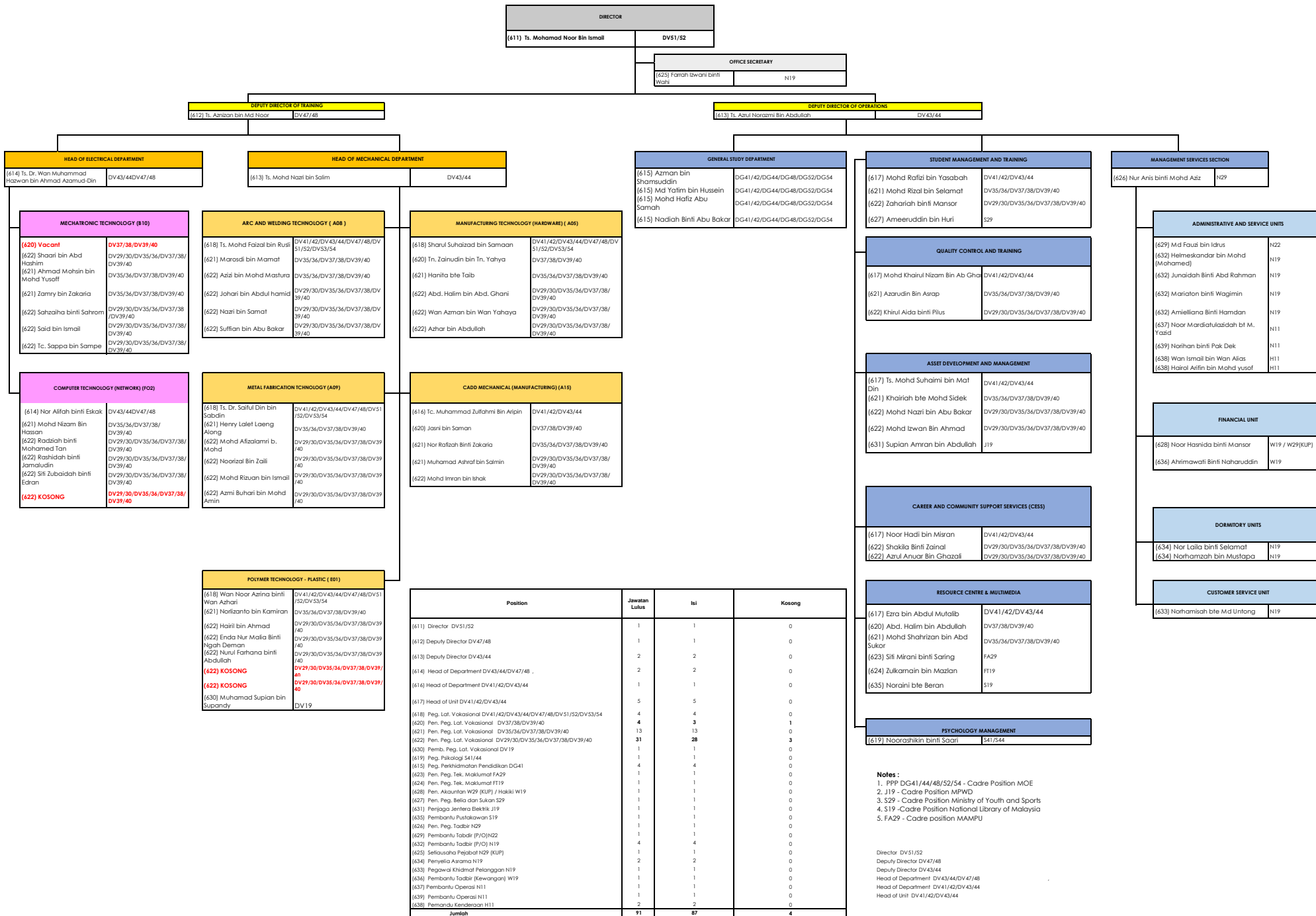


**ORGANIZATION CHART ACCORDING TO APPROVED CAPACITY**  
**ORGANIZATION CHART OF TANGKAK INDUSTRIAL TRAINING INSTITUTE, JOHOR DARUL TAKZIM**



Position	Jawatan Luke	Isi	Kosong
(611) Director DV51/52	1	1	0
(612) Deputy Director DV47/48	1	1	0
(613) Deputy Director DV43/44	2	2	0
(614) Head of Department DV43/44/DV47/48	2	2	0
(616) Head of Department DV41/42/DV43/44	1	1	0
(617) Head of Unit DV41/42/DV43/44	5	5	0
(618) Peg. Lat. Vokasional DV41/42/DV43/44/DV47/48/DV51/52/DV53/54	4	4	0
(620) Pen. Peg. Lat. Vokasional DV37/38/DV39/40	4	3	1
(621) Pen. Peg. Lat. Vokasional DV35/36/DV37/38/DV39/40	13	13	0
(622) Pen. Peg. Lat. Vokasional DV29/30/DV35/36/DV37/38/DV39/40	31	28	3
(630) Pemb. Peg. Lat. Vokasional DV19	1	1	0
(619) Peg. Psikologi 341/44	1	1	0
(615) Peg. Pendidikan dan Latihan DG41	4	4	0
(623) Pen. Peg. Tek. Maklumat FA29	1	1	0
(624) Pen. Peg. Tek. Maklumat FT19	1	0	0
(628) Pen. Akauntan W29 (KUP) / Hakiki W19	1	1	0
(627) Pen. Peg. Beka dan Sukon S29	1	1	0
(631) Penjaga Jentera Elektrik J19	1	1	0
(635) Pembantu Pustakawan S19	1	1	0
(626) Pen. Peg. Tadrib N29	1	1	0
(629) Pembantu Tadrib (P/O)N22	1	1	0
(632) Pembantu Tadrib (P/O) N19	4	4	0
(625) Seliausaha Pejabat N29 (KUP)	1	1	0
(634) Penyelia Asrama N19	2	2	0
(633) Pegawai Khidmat Pelanggan N19	1	1	0
(636) Pembantu Tadrib (Kewangan) W19	1	1	0
(637) Pembantu Operasi N11	1	1	0
(639) Pembantu Operasi N11	1	1	0
(638) Pemasnaku Kenderaan H11	2	2	0
<b>Jumlah</b>	<b>91</b>	<b>87</b>	<b>4</b>

- Notes :**
- PPP DG41/44/48/52/54 - Cadre Position MOE
  - J19 - Cadre Position MPWD
  - S29 - Cadre Position Ministry of Youth and Sports
  - S19 - Cadre Position National Library of Malaysia
  - FA29 - Cadre position MAMPU

Director DV51/52  
 Deputy Director DV47/48  
 Deputy Director DV43/44  
 Head of Department DV43/44/DV47/48  
 Head of Department DV41/42/DV43/44  
 Head of Unit DV41/42/DV43/44